

NORMAL CHECKLIST



BEFORE START

Passenger Briefing COMPLETE
 Belts / Doors SECURE
 Avionics Master OFF
 Elec Switches (except beacon) OFF
 Circuit Breakers CHECK IN

ENGINE START

Fuel Selector BOTH
 Mixture RICH
 Throttle OPEN 1/4-1/2 INCH
 Carb Heat OFF
 Prime AS REQUIRED
 Master ON
 Brakes HOLD
 Prop Area CLEAR
 Ignition Start THROTTLE 1000 RPM
 Oil Pressure CHECK
 Avionics Master ON
 Lights AS REQUIRED

TAXI AWAY FROM HAZARDS

AFTER START

Flaps UP
 Mixture LEAN
 Transponder SET
 Directional Gyro SET

BEFORE TAKEOFF

Flight Controls FREE / CORRECT
Fuel Selector **BOTH**
Trim **TAKEOFF**
Mixture **RICH**
 Throttle 1700 Rpm
 Carb Heat CHECK
 Magnetos CHECK
 Primer IN / LOCKED
Engine Instruments **CHECK**
 Suction CHECK
 Ammeter CHECK
 Throttle IDLE then 1000
 Flight Instruments CHECK / SET
Fuel Quantity **CHECK**
 Radio / Transponder FREQ / SQUAWK
Flaps **SET**
 Doors / Windows SECURE
Light / Strobes **ON**
 Time Note

CLIMB

Throttle FULL
 Flaps UP
 Engine Instruments MONITOR
 Mixture LEAN ABOVE 3000'

CRUISE

Throttle SET ≤75% POWER
 Engine Instruments MONITOR
 Mixture LEAN

BEFORE LANDING

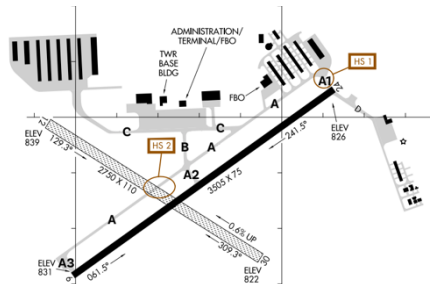
Altimeter SET
 Fuel Selector BOTH
 Mixture RICH
 Carb Heat AS REQUIRED
 Landing Light ON
 Seatbelts SECURE

AFTER LANDING

Radios SET
 Flaps UP
 Mixture LEAN
 Carb Heat OFF
 Light / Strobes OFF

SHUTDOWN

Throttle 1000 RPM
 Avionics Master OFF
 Lights (except beacon) OFF
 Mixture CUTOFF
 Ignition OFF
 Master OFF
 Fuel Selector LEFT OR RIGHT
 Control Lock INSTALL
 Pitot Cover APPLY



N53703

KARB - ATIS 134.55 - GND 121.6 - TWR 120.3

EMERGENCY CHECKLIST

ENGINE FAILURE IN FLIGHT

Airspeed..... 65 KNOTS
Fuel Selector BOTH
Mixture RICH
Carb Heat ON
Primer IN / LOCKED
Ignition BOTH

FORCED LANDING NO POWER

Airspeed..... (FLAPS UP) 65 KNOTS
..... (FLAPS 10° - FULL) 60 KNOTS
Mixture CUTOFF
Fuel Selector OFF
Ignition OFF
Flaps..... AS REQUIRED
Master OFF
Doors..... UNLATCH

PRECAUTIONARY LANDING W/ POWER

Flaps..... 20°
..... (FINAL APPROACH) FULL
Airspeed..... 60 KNOTS
Master OFF
Doors..... UNLATCH
Mixture CUTOFF
Ignition OFF

LOW-VOLTAGE LIGHT/DISCHARGE

Avionics Master OFF
ALT Circuit Breaker CHECK IN
Master (both sides)..... OFF then ON
Low-voltage Light CHECK OFF
Avionics Master ON
If low-voltage illuminates again:
Alternator OFF
Nonessential Equipment.... REDUCE LOAD
Land as soon as practical

EXCESSIVE RATE OF CHARGE

Master (ALT ONLY)..... OFF
Alternator Circuit Breaker PULL
Nonessential Equipment.... REDUCE LOAD
Land as soon as practical

SEE POH SECTION 3 FOR ADDITIONAL LISTED EMERGENCY PROCEDURES

FIRE DURING START

Cranking..... CONTINUE
If engine starts:
Throttle 1800 RPM
Mixture CUT OFF
If no start:
Throttle FULL
Mixture CUTOFF
Cranking..... CONTINUE
Master OFF
Ignition OFF
Fuel Selector..... OUT
Extinguisher OBTAIN / ACTIVATE

ENGINE FIRE IN FLIGHT

Mixture CUTOFF
Fuel Selector..... OUT
Master OFF
Cabin Heat / Air Vents CLOSED
Airspeed 100 KNOTS or MORE
Forced Landing..... EXECUTE

ELECTRICAL FIRE IN FLIGHT

Master OFF
Avionics Master..... OFF
Electrical Switches..... OFF
Cabin Heat / Air Vents CLOSED
Extinguisher ACTIVATE, as needed
VENTILATION..... OPEN (when fire out)
With extreme caution and care:
Master ON
Circuit Breakers..... CHECK (do not reset)
Radio Switches..... OFF
Avionics Master..... ON
Radio / Electrical Switches
..... ON, ONE AT A TIME WITH PAUSE

CABIN FIRE

Master OFF
Cabin Heat / Air Vents CLOSED
Extinguisher ACTIVATE then VENTILATE

WING FIRE

Nav / Strobe Lights OFF
Pitot Heat..... OFF
Side slip away from the fire